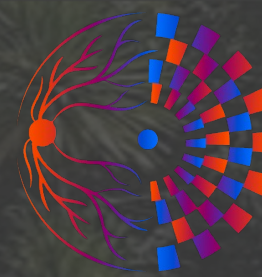




RETINA & VÍTREO  
UNICAMP



48<sup>th</sup> BRAVS Meeting  
**RETINA**  
**2024**  
CONNECTING SCIENCE  
TO REAL WORLD

April 18<sup>th</sup> to 21<sup>st</sup>  
Royal Palm Hall  
Campinas - SP  
**Brazil**

# EXTENSIVE MACULAR ATROPHY WITH PSEUDODRUSEN (EMAP) - NOVO FENÓTIPO DE ATROFIA MACULAR: RELATO DE CASO

Marina C. Soares<sup>1</sup>, Isadora A. Rabelo<sup>1</sup>, Gabriel Saboia, Matheus Gasparini, Andrea M. Torigoe<sup>1</sup>,  
Maurício A. Nascimento<sup>1</sup>

1. Department of Ophthalmology, Campinas State University (UNICAMP)



## **PURPOSE:**

- ✓ Report a case of Extensive Macular Atrophy with Pseudodrusen (EMAP) – recently described cause of macular atrophy



## **METHODS→**

- ✓ This is a case report study that was developed with a female patient treated at the Hospital das Clínicas da Unicamp in Abril, 2023. The patient in question agreed to participate in the present study, by signing the free and informed consent form.
- ✓ For the preparation of this research, we used the data collected during the anamnesis and detailed ophthalmological examination, including multimodal evaluation.



## CASE REPORT

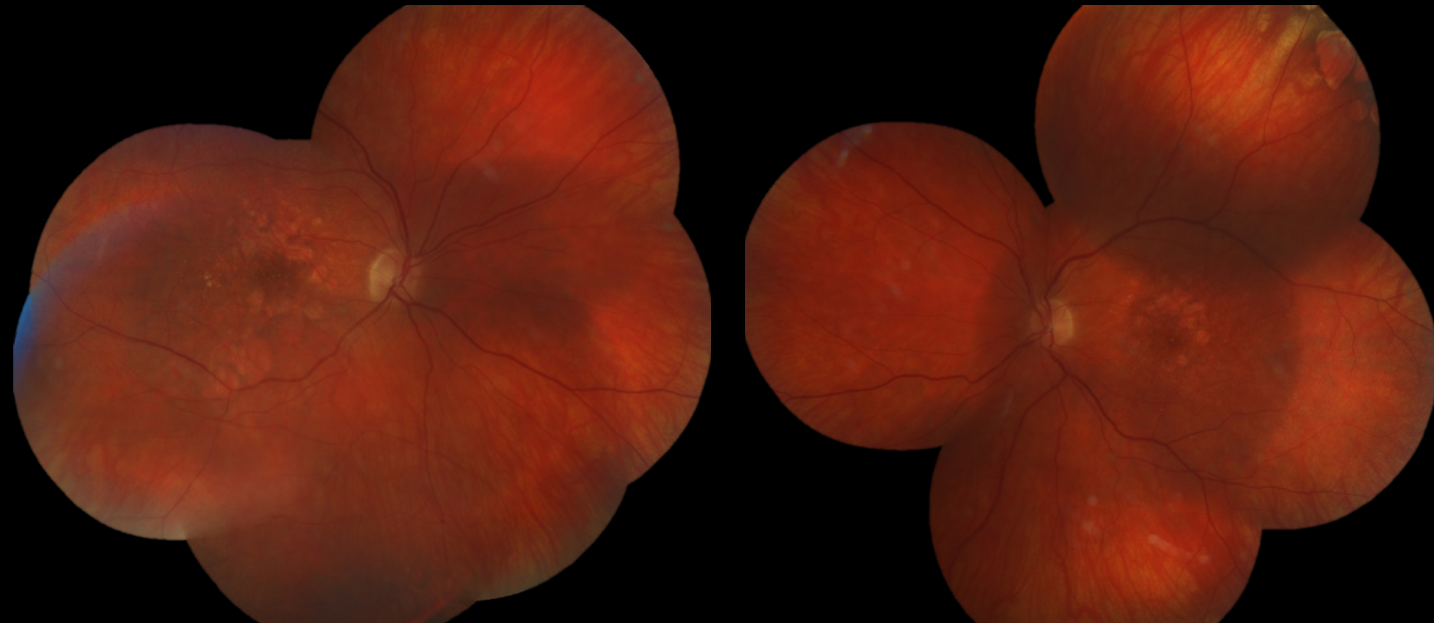
✓ Patient, female, 52 years old, complaining of painless bilateral progressive low visual acuity for about 1 year, without comorbidities or previous ophthalmological history.

✓ Ophthalmological examination:

	Right eye	Left eye
BVCA	20/60	20/60
Applanation tonometry	12	12
Biomicroscopy	Without anomalies	

### Fundoscopy

✓ Showed vertical macular atrophy and areas of well-defined peripheral chorioretinal atrophy (paving stones) extending to the arcades bilaterally.



FAF

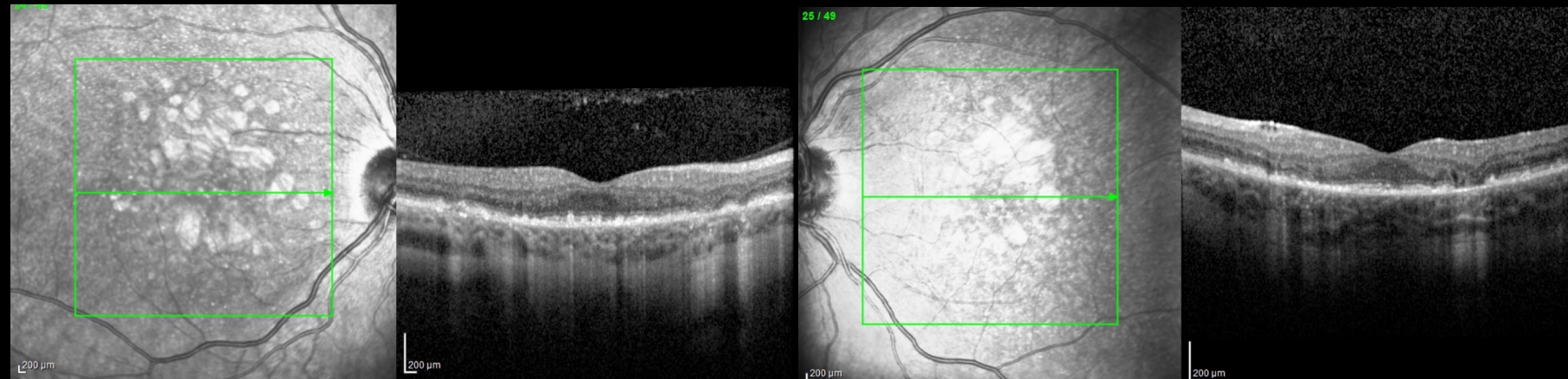
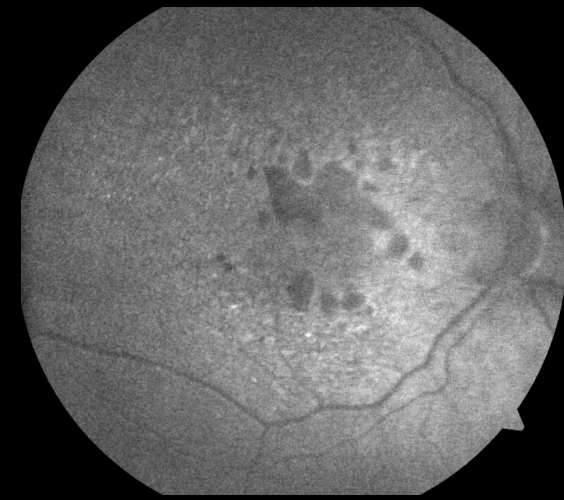
✓ Showed hypoautofluorescent macular atrophic areas

AF

✓ Macular atrophic area showed hyperfluorescent by defect window.

OCT

✓ Multiple subretinal drusenoid deposits were visualized with areas of signal hypertransmission due to atrophy of the outer layers of the retina in both eyes.



- ✓ Given the epidemiology and clinic developed, he raised the hypothesis of Extensive Macular Atrophy with Pseudodrusen (EMAP) and adopted expectant management with annual follow-up.



## **RESULTS AND DISCUSSION:**

- ✓ Recognition of this new, recently described macular degeneration phenotype, although the pathophysiology is still poorly defined and no treatment is currently available, is essential, since the majority of patients are misdiagnosed with dry AMD or retinal and/or choroidal dystrophies.