



April 18th to 21st
Royal Palm Hall
Campinas - SP
Brazil



CIÊNCIAS MÉDICAS
UMA INSTITUIÇÃO FELUMA

AZOOR-like paraneoplastic retinopathy

Lucas Assis Costa

Ana Luisa Souto Gandra

Erika Pacheco Magalhães Diniz

Instituto de Olhos Ciências Médicas de Minas Gerais (IOCM)



48th BRAVS Meeting
RETINA
2024
CONNECTING SCIENCE
TO REAL WORLD

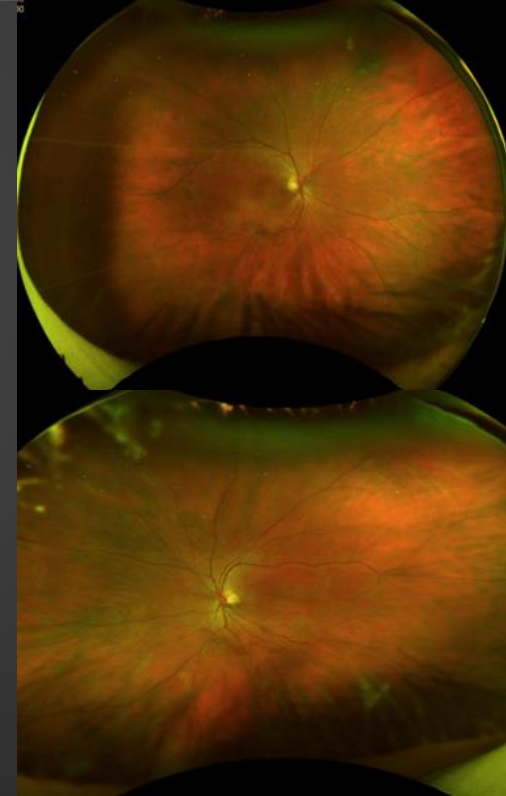
April 18th to 21st
Royal Palm Hall
Campinas - SP
Brazil



CIÊNCIAS MÉDICAS
UMA INSTITUIÇÃO FELUMA

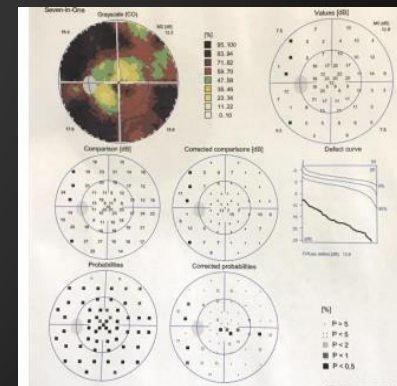
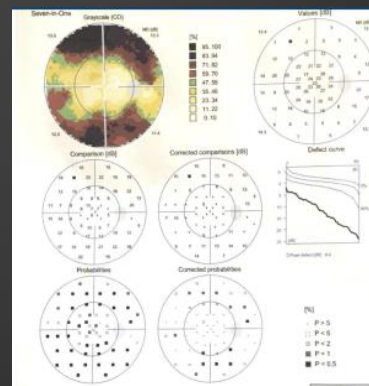
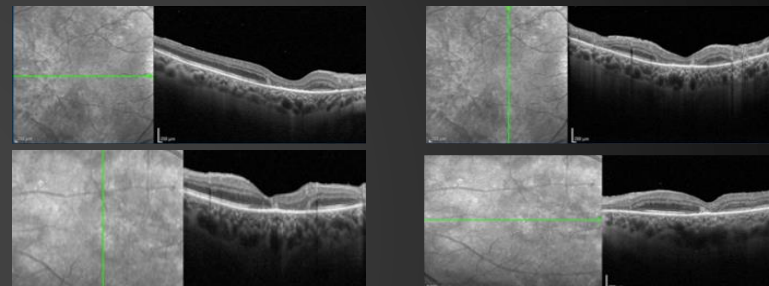
CASE REPORT

- 72-year-old man with rapidly declining low visual acuity.
- Comorbidities: diabetes, arterial hypertension, peripheral vascular insufficiency, coronary disease.
- History of bilateral phacoemulsification.
- Best visual acuity of 20/800 in the right eye (RE) and 20/150 in the left eye (LE).
- Biomicroscopy revealed vitreous cellularity (+/++++).
- Fundoscopy did not demonstrate noteworthy changes other than arteriolar attenuation.



MULTIMODAL IMAGING

- Autofluorescence: hyperautofluorescent regions adjacent to the vascular pathway bilaterally.
- Computerized visual field test: peripheral constriction.
- OCT: degeneration in the photoreceptor and external nuclear layers, more pronounced where hyperautofluorescence was observed.





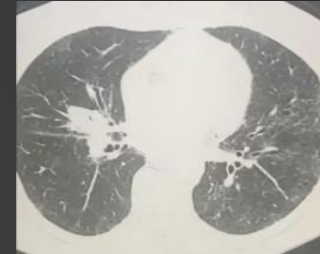
48th BRAVS Meeting
RETINA
2024
CONNECTING SCIENCE
TO REAL WORLD

April 18th to 21st
Royal Palm Hall
Campinas - SP
Brazil



CIÊNCIAS MÉDICAS
UMA INSTITUIÇÃO FELUMA

- Inflammatory and infectious workup yielded normal results.
- Neoplastic screening via CT scan identified a nodular lesion in the upper lobe of the right lung, confirmed as small cell lung neoplasm on biopsy.



DISCUSSION

- Autoimmune retinopathies, including presentations resembling acute zonal outer retinopathy (AZOOR) may occur secondary to infection or as paraneoplastic syndromes.
- Symptoms include sudden photopsia and progressive scotoma, often with unremarkable fundus examination.
- Multimodal imaging reveals degeneration of photoreceptors in a trizonal pattern with sequential involvement of the outer retinal, RPE and choroid.
- Early recognition is crucial due to potential association with life-threatening conditions such as neoplasms.



48th BRAVS Meeting
RETINA
2024
CONNECTING SCIENCE
TO REAL WORLD

April 18th to 21st
Royal Palm Hall
Campinas - SP
Brazil



CIÊNCIAS MÉDICAS
UMA INSTITUIÇÃO FELUMA

REFERENCES

1. Grange L, Dalal M, Nussenblatt RB, Sen HN. Autoimmune retinopathy. *Am J Ophthalmol.* 2014 Feb;157(2):266-272.e1. doi: 10.1016/j.ajo.2013.09.019.
2. Fung AT, Lo-Cao E, Cornish EE. Acute zonal occult outer retinopathy-like presentation secondary to scleral buckle. *Am J Ophthalmol Case Rep.* 2022 Oct 13;28:101716. doi: 10.1016/j.ajoc.2022.101716
3. Shah D, Khedia D, Saurabh K, Roy R. Multimodal imaging signatures in a case of acute zonal occult outer retinopathy. *Indian J Ophthalmol.* 2018 Sep;66(9):1349-1352.