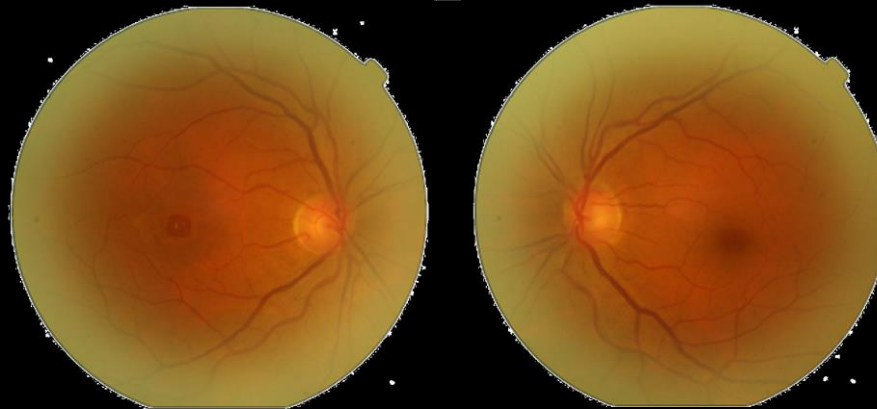


# An effective macular hole closure pattern

A 63-year-old female patient complained of blurry vision in the right eye for 1 year

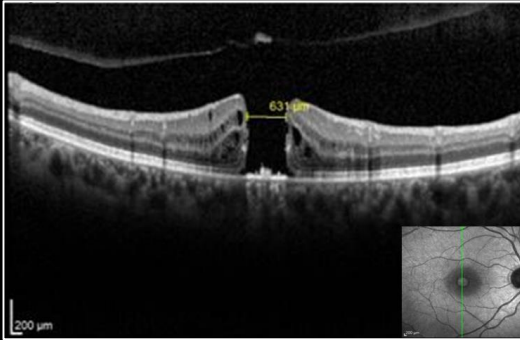
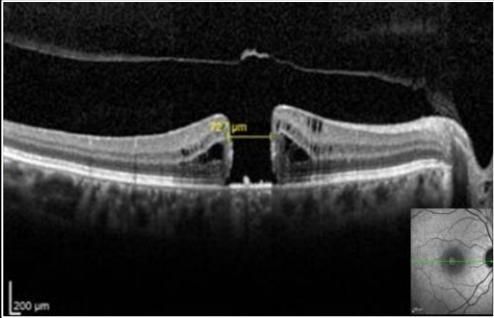
	Right eye	Left eye
Visual acuity	20/400 (-1,25DE)	20/20 (-1,25DE)
Intraocular pressure (IOP)	16 mmHg	16 mmHg
Anterior biomicroscopy	without changes	without changes

Fundoscopy

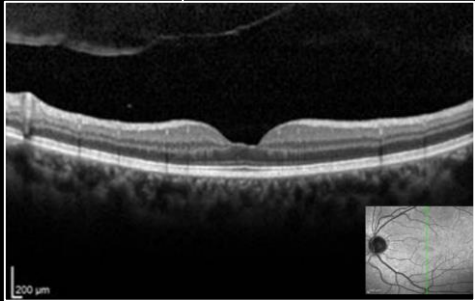
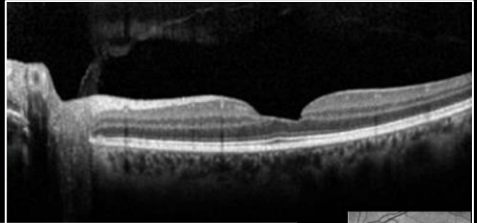


# OCT right eye

# OCT left eye

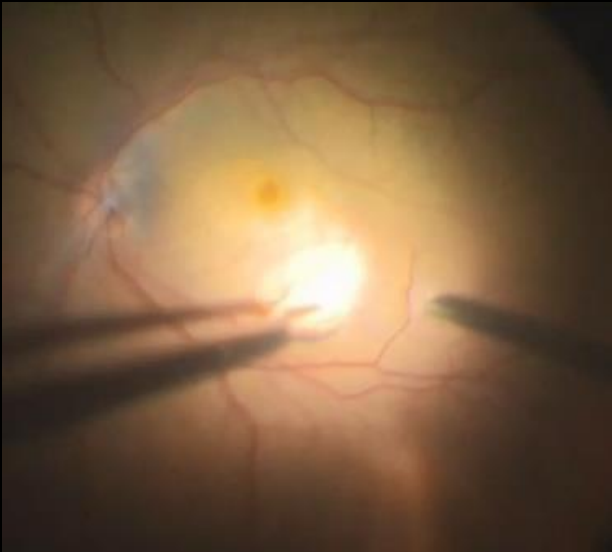


Large macular hole (MH)  
727  $\mu\text{m}$  in vertical diameter and  
631  $\mu\text{m}$  in horizontal diameter



Lamellar macular hole  
Irregular foveal contour, a break in the  
inner fovea

*Phacoemulsification  
23-gauge pars plana vitrectomy  
with free internal limiting flap in right eye*

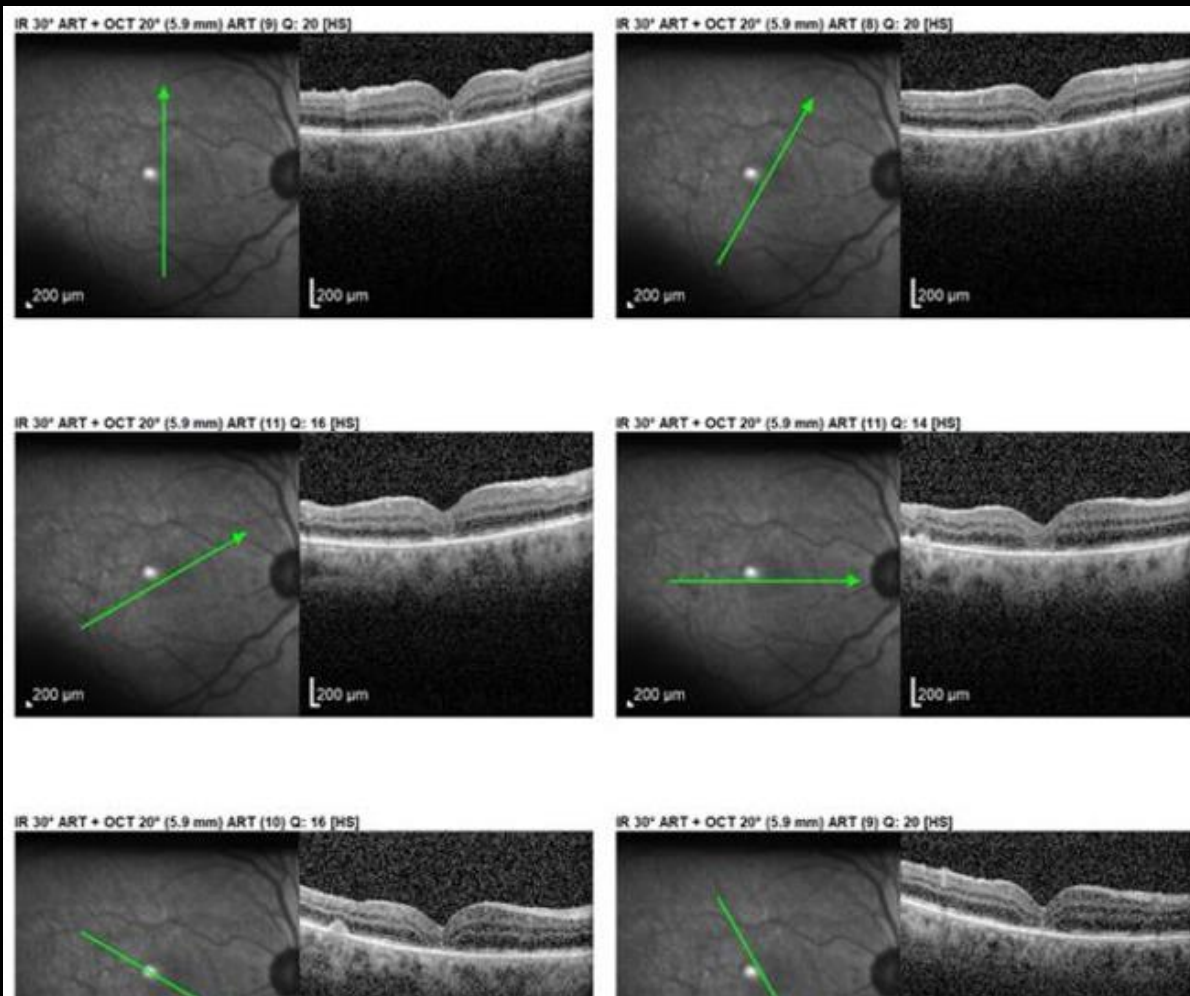


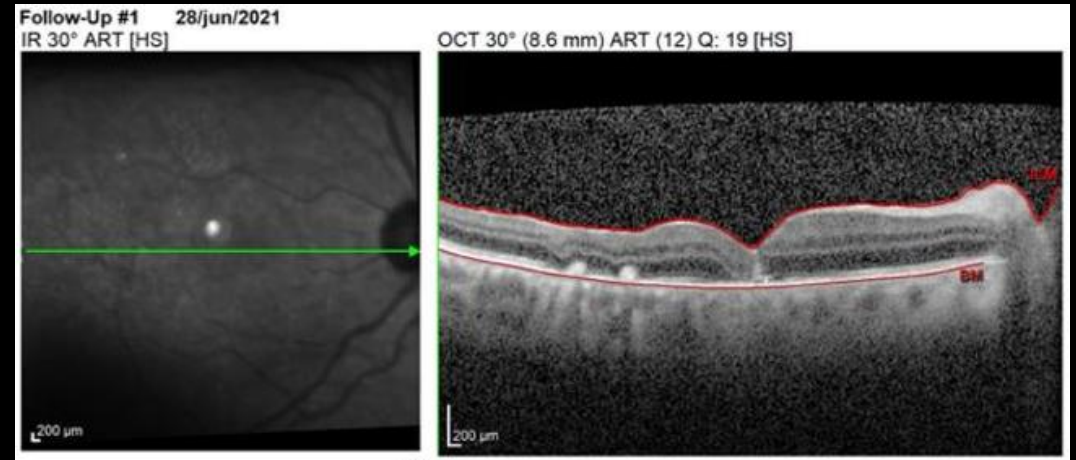
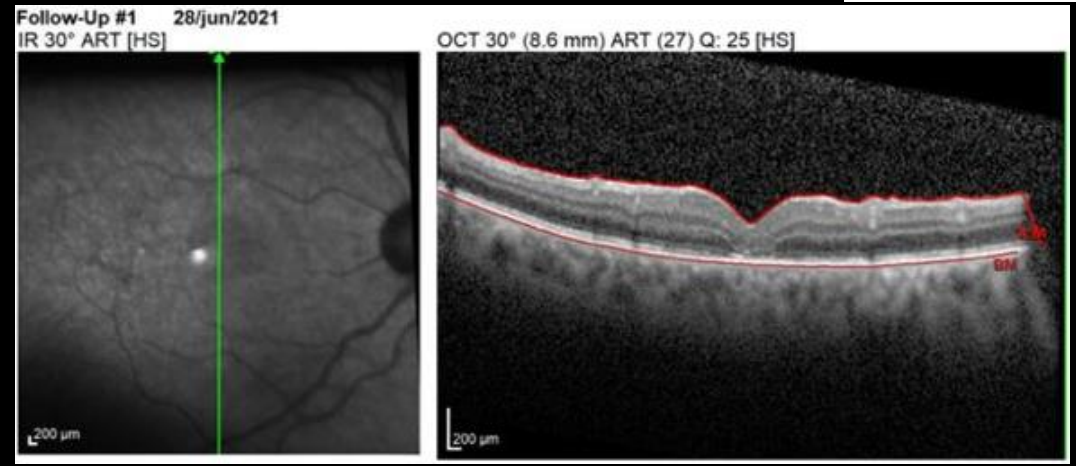
Free ILM flap peeled off and put inside the MH

**FOLLOW-UP 1 MONTH**

Formally closed MH, with interposed “filling” tissue plugs the foveolar dehiscence

BCVA 20/80





**FOLLOW-UP 3 MONTH**

Improved reconstitution  
retinal anatomy throughout  
all retinal layers, with a small  
residual plug

BCVA 20/40